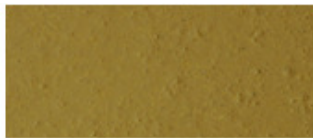


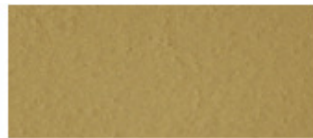
## Flowfresh HF (6-9 mm)



### Standard Colour Chart



Buff



Cream



Mustard



Red



Green



Grey

The applied colours may differ slightly from the examples shown above.  
Contact our customer services for a true colour sample or a special colour match.

### Description

Flowfresh HF is heavy duty, chemical resistant, antimicrobial polyurethane resin floor screed. Flowfresh HF incorporates Polygiene® - a performance based antimicrobial which inhibits the growth of bacteria, fungi, moulds and mildew.

### Typical Uses

Ideal for wet processing zones such as food manufacturing, food preparation areas and chemical processing plants.

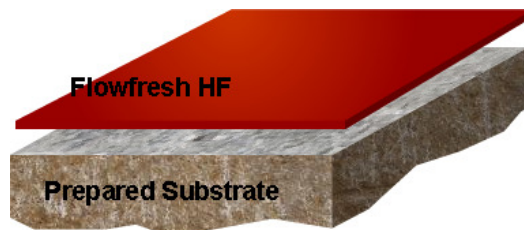
### Benefits

- Proven antimicrobial performance
- High chemical resistance
- Easy to clean and sterilise anti-slip surface, minimal joints
- Heat resistant to 120°C
- Steam cleanable
- Freeze/thaw resistant
- High abrasion resistance
- Withstands high mechanical stress
- Good alternative to expensive acid resistant tiles
- Low odour during application
- Monolithic
- Fast return to service

### Project References

B.Food, Saha Farms, CP Foods, Sun Valley, Nestle, Ajinomoto, Malee Sompran, Thai International Airways, Panus Poultry

### System Design



## Model Specification

Product: Flowfresh HF

Finish: Matt

Thickness: 6-9mm

Colour: \_\_\_\_\_

Preparatory work and application in accordance with manufacturer's instructions.

Manufacturer: Flowcrete Asia Sdn. Bhd.

Telephone: Customer Service - +603 6277 9575

## Substrate Requirements

Concrete or screed substrate should be a minimum of 25N/mm<sup>2</sup>, free from laitance, dust and other contamination. The substrate should be surface dry and free from rising damp and ground water pressure.

## Available in Multi-Pack Supply Format

-Flowfresh HF/MF/RT/SL (A & B)

-Flowfresh HF/MF/RT Filler C

-Flowfresh HF Filler D

## Products Included in this System

Flowfresh HF

Detailed application instructions are available upon request.

## Installation Service

The installation should be carried out by a Flowcrete approved applicator with a documented quality assurance scheme. Obtain details of our approved contractors by contacting our customer service team or enquiring via our web site at [www.flowcrete.com.my](http://www.flowcrete.com.my).

## Environmental Considerations

The finished system is assessed as non-hazardous to health and the environment. The long service life and seamless surface reduce the need for repairs, maintenance and cleaning. Environmental and health considerations are controlled during manufacture and application of the products by Flowcrete staff and fully trained and experienced contractors.

## Focus on the Floorzone

Flowcrete Asia Sdn Bhd is a division of the Flowcrete Group, world leaders in specialist industrial and commercial flooring. Systems available include: underfloor heating systems, floor screeds, surface damp proof membranes, decorative floor finishes, seamless terrazzo, car park deck waterproofing and corrosion protection systems... to name just a few. Our corporate objective is to satisfy your flooring needs.

## Microbial / Fungal Resistance

The Polygiene® antimicrobial additive incorporated into Flowfresh HF provides control of most bacteria and fungi which come into contact with the floor.

## Colour Stability

Flowfresh HF is not colour fast and may change colour over time (exhibits a yellowing effect). Colour change depends on the UV light and heat levels present and hence the rate of change cannot be predicted. This is more noticeable in light colours and blues but does not compromise the product's chemical resistance or physical characteristics.

## Technical Information

The figures that follow are typical properties achieved in laboratory tests at 20 °C and at 50% Relative Humidity.

Fire Resistance	BS476:Part 7 Surface Spread of Flame: Class 2 (indicative)
Slip Resistance	TRRL Pendulum Slip Test Dry 80 Wet min 35
Impact Resistance	BS8204 Part 1 Cat: A (<0.5mm) ISO6272 1kg weight >1.8m 2kg weight >1.5m
Temperature Resistance	From -25°C to 100°C (at 6mm) From -45°C to 120°C (at 9mm)
Coefficient of Thermal Expansion	ASTM C531: 3.74 x 10 <sup>-5</sup> °C <sup>-1</sup>
Water Permeability	Nil – Karsten test (impermeable)
Vapour Permeability	ASTM E96:90 3g/m <sup>2</sup> /24hrs (at 9mm thick)
Surface Hardness	180secs. Koenig Hardness Test
Chemical Resistance	Contact Technical Department. Excellent resistance to sugars and most acids (organic and inorganic)
Abrasion Resistance	Taber Abrader: 0.12g loss per 1000 cycles (1 kg load using CS17 wheels)
Compressive Strength	60 N/mm <sup>2</sup> (BS6319)
Flexural Strength	20 N/mm <sup>2</sup> (BS6319)
Tensile Strength	10 N/mm <sup>2</sup> (BS6319)
Bond Strength	Greater than cohesive strength of 25 N/mm <sup>2</sup> concrete. >1.5 MPa.
Toxicity (when cured)	Taint Free to sensitive foodstuffs

## Speed of Cure

	10°C	20°C	30°C
Light traffic	36 hrs	24 hrs	12 hrs
Full traffic	72 hrs	48 hrs	24 hrs
Full chemical cure	10 days	7 days	6 days

## Aftercare - Cleaning and Maintenance

Clean regularly using a single or double headed rotary scrubber drier in conjunction with a mildly alkaline detergent.

## Important Note

Flowcrete's products are guaranteed against defective materials and manufacture and are sold subject to its standard Terms and Conditions of Sale, copies of which can be obtained on request.

## Further Information

To ensure you are specifying a fit for purpose flooring system for your project please consult our Technical Advisors on the number below or visit our website to register your interest in specifying one of the most durable floors on the market.

Flowcrete Asia Sdn Bhd (366254-X)  
The Flooring Technology Centre  
Lot 37631 & 37632, Jalan 6/37A,  
Taman Bukit Maluri,  
Industrial Area Kepong,  
52100 Kuala Lumpur, Malaysia.  
Tel: +(603) 6277 9575  
Fax: +(603) 6277 4645  
Email: [malaysia@flowcrete.com](mailto:malaysia@flowcrete.com)  
Flowcrete Asia is an RPM company

Flowcrete Thailand  
522/41, Baan Klang Muang 1,  
Soi Sahakarnpramoon,  
Pracha-Uthit Road,  
Wangthonglang, Bangkok, 10310.  
Tel: (662) 2530 9611  
Fax: (662) 2530 9610  
E-mail: [thailand@flowcrete.com](mailto:thailand@flowcrete.com)

Flowcrete Indonesia  
2nd Floor, Suite 203,  
Palma One Building,  
Jl. HR Rasuna Said Kav. X2 No. 4  
Jakarta Selatan 12950, Indonesia.  
Tel: +6221 252 3201  
Fax: +6221 252 0720  
E-mail: [indonesia@flowcrete.com](mailto:indonesia@flowcrete.com)

Flowcrete Vietnam  
Representative Office  
3rd Floor, 130 Nguyen Cong Tru Street,  
Nguyen Thai Binh Ward,  
District 1, HCMC, Vietnam  
Tel: +848 3821 6561  
Fax: +848 3821 6501  
E-mail: [vietnam@flowcrete.com](mailto:vietnam@flowcrete.com)